



Midnight Sun's focus is the exploration and discovery of world class copper deposits in the Zambian-Congo copper belt. The Zambian-Congo Copper Belt is host to some of the world's richest mines, with operators that include Barrick, Rio Tinto, Glencore, Ivanhoe Mines and First Quantum Minerals.

Midnight Sun has the right to earn 60% to 80% of the 505 km² Solwezi Licenses in Zambia.

Notable Mining Area

KANSANSHI MINING COMPLEX

Operated by First Quantum Minerals

Copper/gold mine is Africa's largest copper mine with over 1 billion tonnes grading .8% Cu and 4 million oz. Au. Smelter and SX/EW plant on site.

Solwezi License Targets

22 ZONE

Drill discovery of **14.2 metres of 5.71% Cu** near surface oxide material with SX/EW production potential as well as deep sulphide potential. Located 10 Km from Kansanshi mining complex, viewed as possible lookalike.

DUMBWA

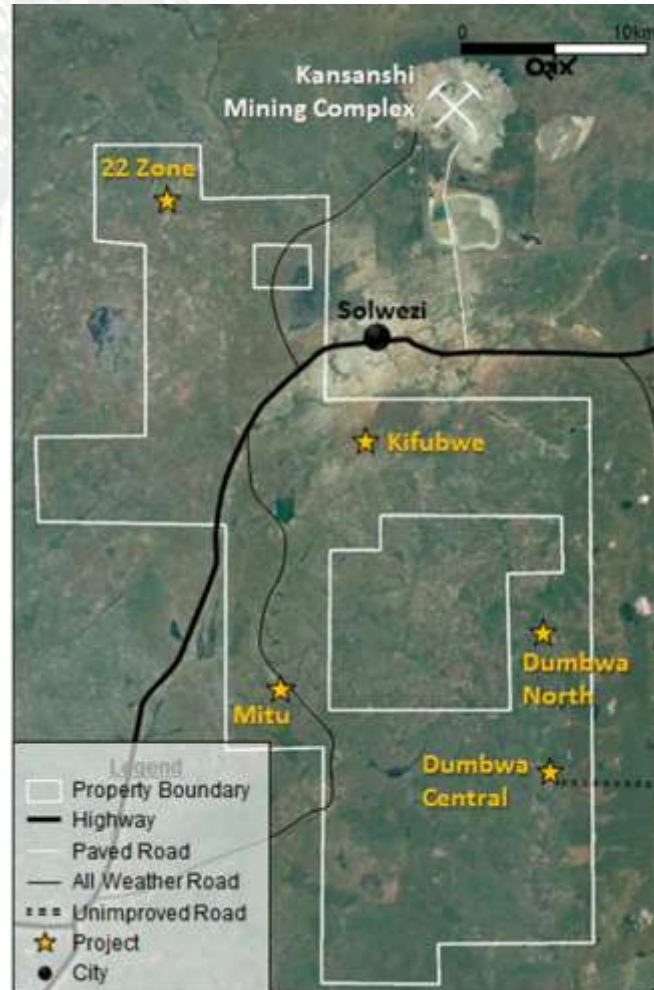
Multiple oxide copper cobalt intercepts along **14 km** soil anomaly. Soil samples peaked at **7,280 Cu ppm**. Economic oxide intervals located in drill holes, further exploration work required.

MITU

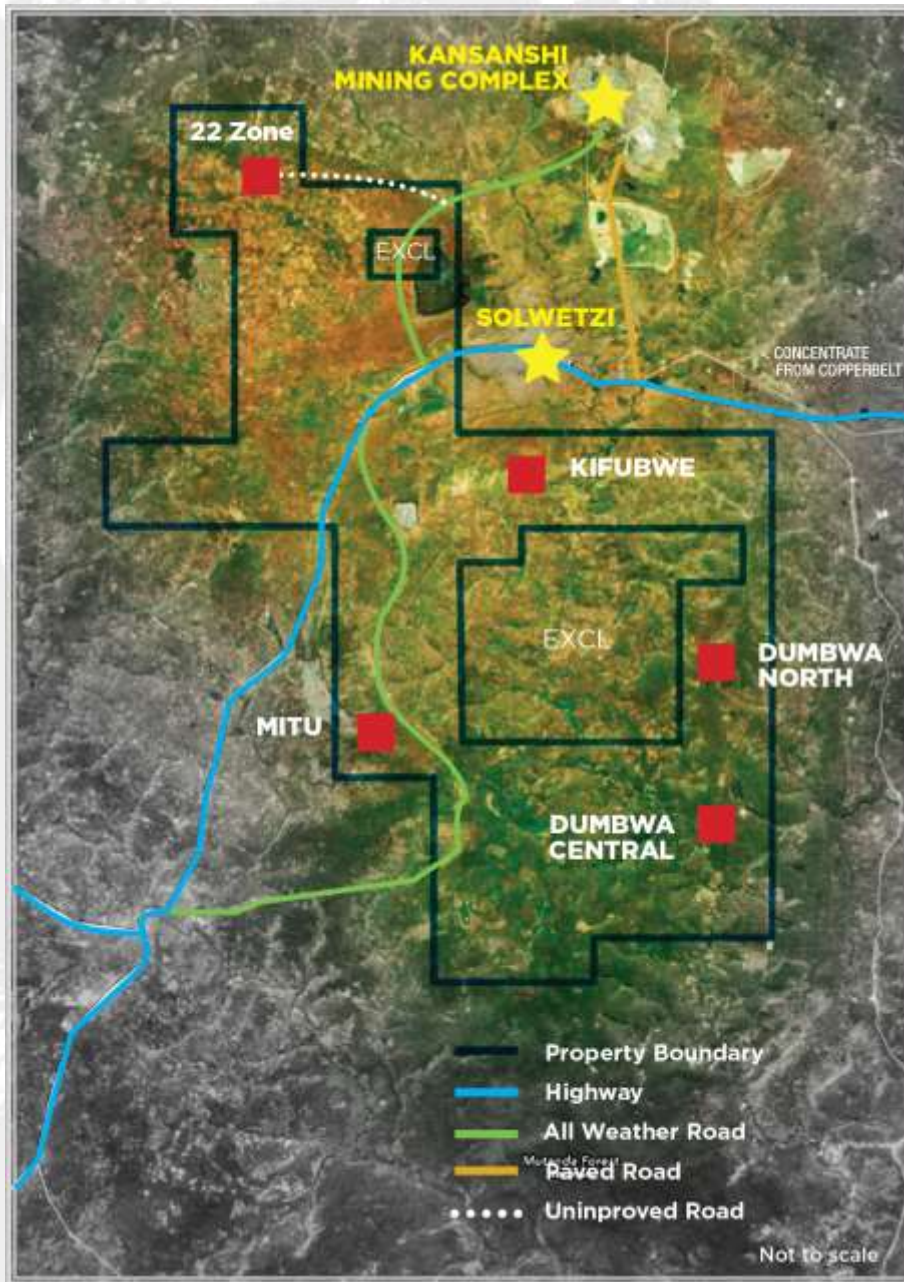
Copper-cobalt-nickel-gold intercepts in ore shale including **11.6 metres of 4.23% Cu Eq** Geophysical work has confirmed the favourable geological unit for over 17km.

KIFUBWE

Large nickel soil anomaly over 6 km in strike length. Further exploration work required.



61,478,726 SHARES OUTSTANDING



Solwezi Area Mining Infrastructure: All targets are close to road access and Kansanshi Mining Complex which include operating SX/EW facilities and smelter.

84,376,276 MILLION SHARES FULLY DILUTED