

Copper and Cobalt in Zambia

Midnight Sun's focus is the exploration and discovery of world class copper and cobalt deposits in the **Zambian-Congo copper belt**, currently holding the **506 km² Solwezi Licenses** in Zambia.

The **Zambian-Congo Copper Belt** is host to some of the world's richest mines, with operators that include **Barrick, Rio Tinto, Glencore, Ivanhoe Mines and First Quantum Minerals**.

NOTABLE MINING AREA

KANSANSHI MINING COMPLEX

Operated by **First Quantum Minerals**

Copper/gold mine is Africa's largest copper mine with over 1 billion tonnes grading .8% Cu and 4 million oz. Au. Smelter and SX/EW plant on site.

SOLWEZI LICENSE TARGETS

22 ZONE

Drill discovery of **14.2 metres of 5.71% Cu** near surface oxide material with SX/EW production potential as well as deep sulphide potential. Located 10 Km from Kansanshi mining complex, viewed as possible lookalike.

DUMBWA

Multiple oxide copper/cobalt intercepts along **14 km** soil anomaly. Soil samples peaked at **0.72% (7,280 Cu ppm)**. Economic oxide intervals located in drill holes, further exploration work required.

MITU

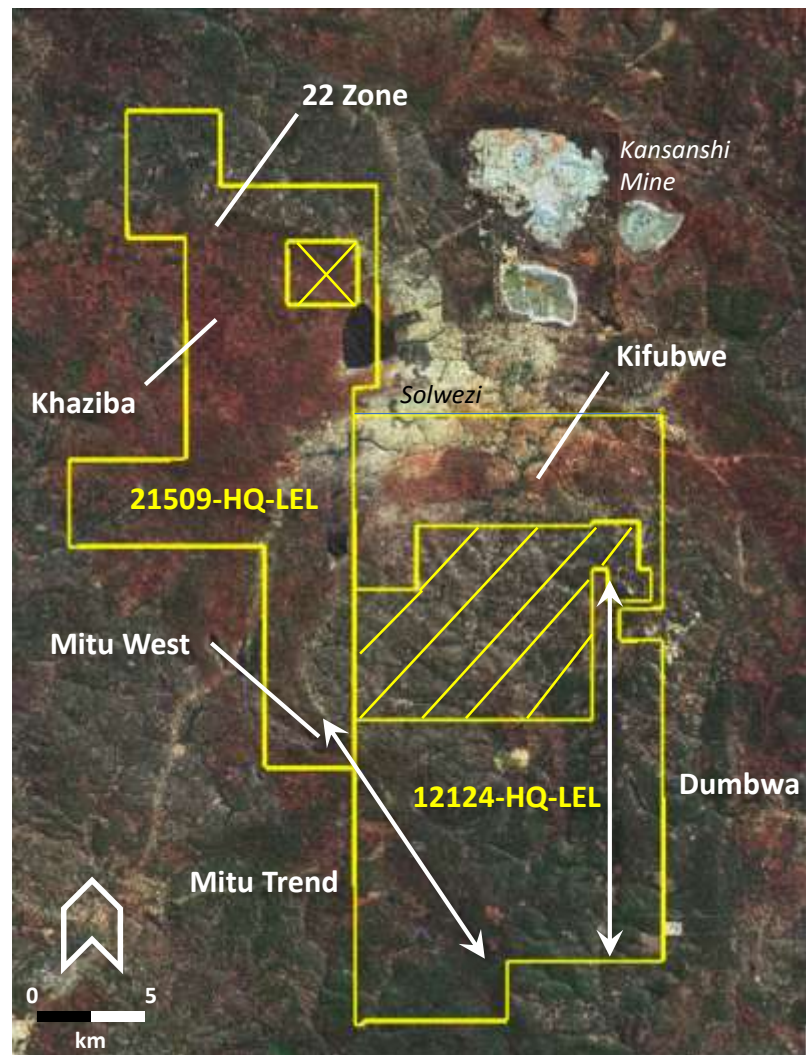
Copper-cobalt-nickel-gold intercepts in ore shale including **11.6 metres of 4.29% Cu Eq*** over strike over 3km. Air core drilling has confirmed the favourable geological unit for over 17km.

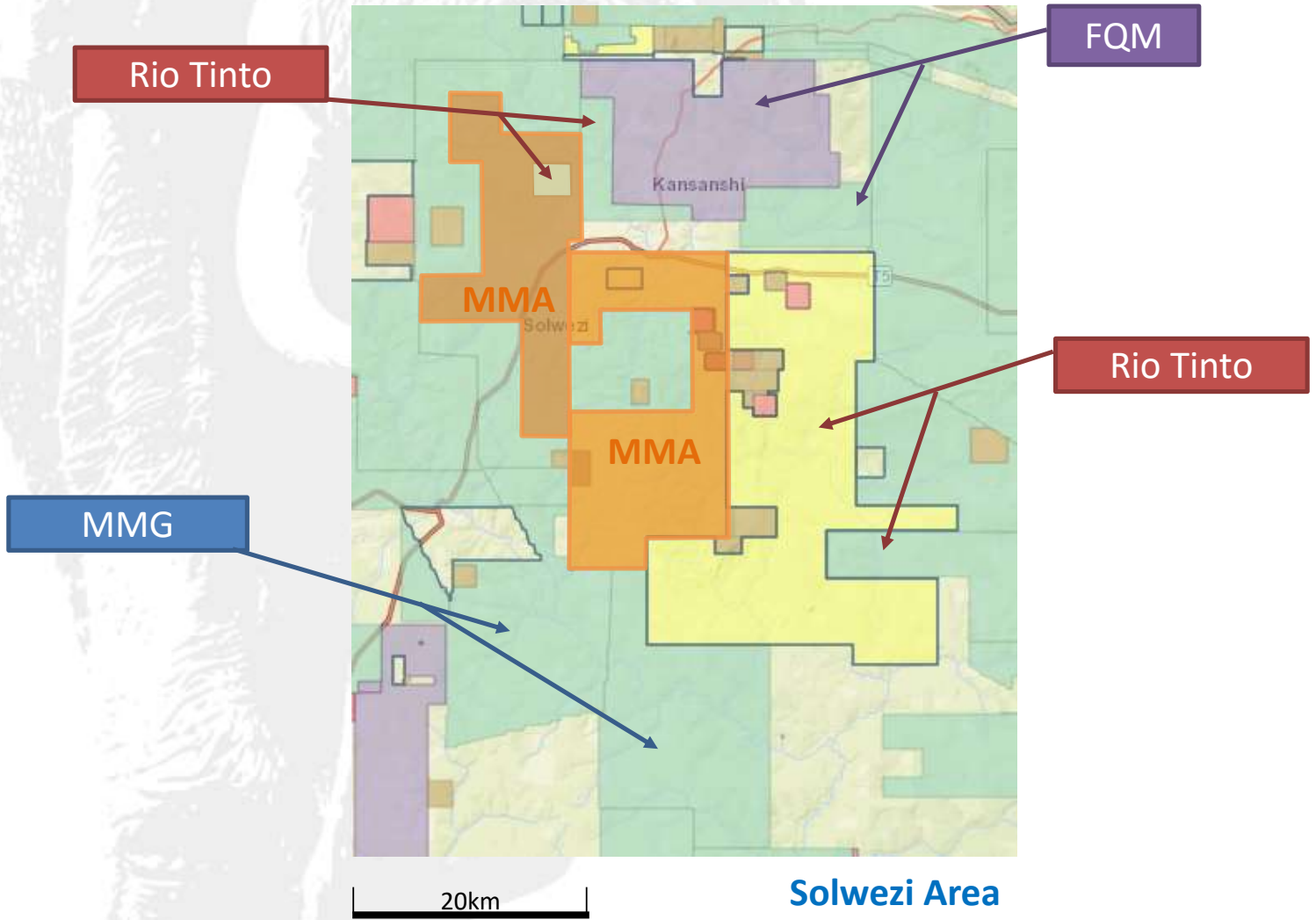
KIFUBWE

Large nickel soil anomaly over **6 km in strike** length. Further exploration work required.

KHAZIBA

Favourable geology of **black shale** with sulphides encountered in initial scout drilling. Further exploration work required.





*Copper equivalent values are estimated using \$2.73/lb copper, \$29.26/lb cobalt, and \$6.03/lb nickel and are presented only for ease of interval comparison.